

# BOROUGH OF WESTVILLE

Fall/Winter  
2010

## Message from Mayor Welsh



*Dear Resident,*

### Greetings!

*Hello and welcome to another informative edition of the "Mayor's Newsletter". It's hard to believe that summer has now come and gone and we will soon be preparing for winter coats, Thanksgiving festivities and even Christmas decorations. This year has been an eventful one for our little town of Westville, full of momentum and change.*

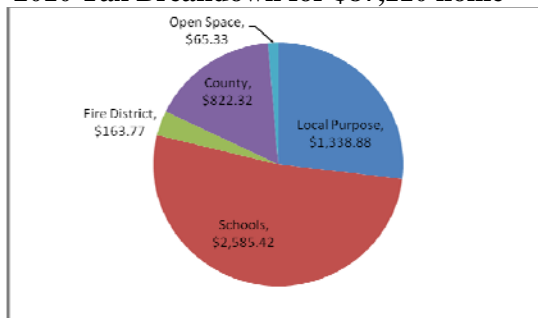
*This year we welcomed new businesses in virtually every corridor of our town: Crazy Cones Ice Cream Parlor and Cafe, 150 Broadway, MarsDirect, 1 Deadline Drive, Affordable Taxi, 600 Gateway Boulevard and Perks Coffee Corner, 191 Broadway.*

*As the end of 2010 draws near, I would like to share with you a detailed look at how your tax dollars are spent. As your Elected Official, along with the Borough Council Members we are keenly aware of the economic stresses and difficulties our residents have been facing in recent years. Your Council Members have been able to keep our Local Purpose portion of your tax bill stable with NO increase for the last three years.*

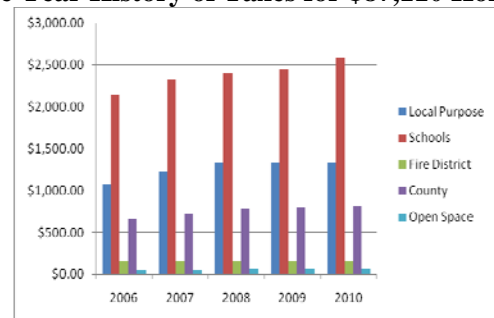
*The below charts represent a graphic overview of tax costs in Westville and are based on a home assessed at the Borough average of \$87,110. The costs to operate your local Municipal Services including Police, Highway, Sewer, Recreation/Parks, Celebrations and Municipal Government Operations are currently about \$112.00 per month for a home with an assessed value of \$87,110.*

*If you have any questions about your Local Purpose Tax Dollars, or a concern about anything else, please do not hesitate to call me at my office: (856) 456-0030, ext. 100, and feel free to send me an e-mail @ [rwelsh@westville-nj.com](mailto:rwelsh@westville-nj.com).*

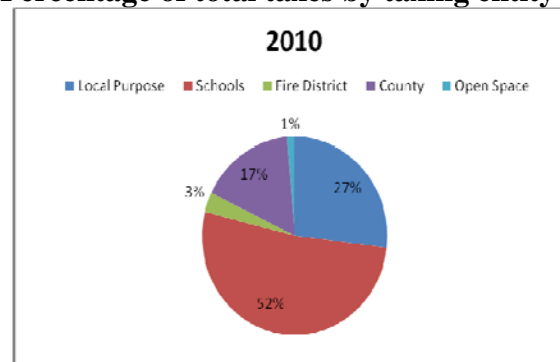
2010 Tax Breakdown for \$87,110 home



Five Year History of Taxes for \$87,110 Home

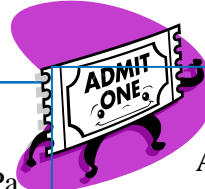


Percentage of total taxes by taxing entity



## Discounted Admission Tickets

Available at 1035 Broadway



### “Winter Tickets” Available:

**SHAWNEE MOUNTAIN**, Shawnee on the Delaware, Pa.  
All Day – Weekend/Holiday: \$39.00  
All Day – Midweek: \$33.00; Night: \$24.00 or Skiers Choice  
Package: \$64.00 Visit [www.shawneemt.com](http://www.shawneemt.com)

**BLUE MOUNTAIN**, Danielsville, Pa.  
Weekend/Holiday: \$45. Or Midweek: \$36.00  
Weekend Tubing: \$26.00 Visit [www.skiblueemt.com](http://www.skiblueemt.com)

**JACK FROST/BIG BOULDER** Blakeslee, Pa. /Lake  
Harmony, Pa.  
Adult Weekend/Holiday/All Day & Night: \$41.  
Adult Midweek/All Day & Night: \$35.  
Youth Weekend/Holiday/All Day & Night \$32.  
Youth Midweek/All Day & Night: \$29.  
Visit [www.jfbb.com](http://www.jfbb.com)

**MOUNTAIN CREEK/Vernon, NJ**  
Adult Weekend/Holiday: \$53.  
Adult Midweek: \$38.  
Youth (7-18 yrs.) Weekend/Holiday: \$38.  
Youth (7-18 yrs.) Midweek: \$28.  
Visit [www.mountaincreek.com](http://www.mountaincreek.com)

**THE HIDDEN VALLEY CLUB/Vernon, NJ**  
Adult Weekend: \$46. /Youth (6-12 yrs.) Weekend  
\$38./Adult/Youth (6-12 yrs.) Midweek: \$21.

**CAMELBACK MOUNTAIN RESORT/**  
Tannersville, Pa. \$6.00 OFF any open-to-close or  
night lift ticket  
Visit [www.skicamelback.com](http://www.skicamelback.com)

**Adventure Aquarium/Camden:**  
Adult Tickets: \$17/Child (2-12 yrs.) \$13.00

*(Prices above reflect discounted prices.) “Summer Tickets” also available for Hershey Park, Dorney Park, Six  
Flags, Great Adventure, Sesame Place, Morey’s Amusements, Hurricane Harbor, Clementon Park, Splash  
Zone, Philadelphia Zoo, Sahara Sam’s Oasis, Steel Pier, Renaissance Faire.*

### Town Watch Meetings

3rd Thursday of each Month @ 7:00 p.m.

In the Parkview School Library

## Vote on Election Day November 2nd

**REMEMBER TO VOTE** at St. John’s Lutheran Church Hall, located on Willow Drive & High Street

All Districts vote here from 6:00 a.m. until 8:00 p.m.

Fire Elections will remain at the Fire House & School Board Elections will continue to be held at Parkview  
School. Any questions, please call the Municipal Clerk’s Office at 456-0030, ext. 10.

### GLOUCESTER COUNTY FLU SHOT SCHEDULES

AVAILABLE ON OUR  
WEBSITE OR IN OUR MUNICIPAL BUILDING

Throughout the year, the Borough receives requests for names of people who would be interested in doing odd chores. We often receive requests for lawn maintenance, snow shoveling, electricians, plumbers, etc., at this time of year. Although we cannot recommend any specific person or company on our own, you may be interested in listing your name on our bulletin board.

*If you wish to list your name, address, phone number and type of service you are interested in providing, please stop by our Municipal Offices and drop off your information.*

## LEAF COLLECTION

*Please rake your leaves to the curb or put in a trash can  
Until December 31<sup>st</sup>.  
After Jan. 1<sup>st</sup> in Bag or Can.*

## Happy Halloween

**3:00 p.m. to 8:00 p.m.**

**Curfew at 8:00 p.m.**

**Friday, October 29**

**Saturday, October 30**

**Sunday, October 31.**

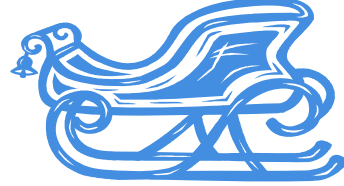
## LARGE ARTICLE DAY

*If a holiday falls on the 1<sup>st</sup> or 3<sup>rd</sup> MONDAY of the month, then Large Article Day will be the FOLLOWING Monday.*

Watch for SANTA on the following evenings from 5:00 p.m. to 9:00 p.m.

<b><u>MONDAY, DECEMBER 6</u></b>	<b><u>WEDNESDAY, DECEMBER 8</u></b>	<b><u>THURSDAY, DECEMBER 9</u></b>
Broadway to Pine Street	Delsea Drive from Broadway to Snyder	Broadway from Delsea Drive to Spruce
Pine Street	Snyder Avenue	Birch Avenue
Station Avenue	Poplar Avenue	Center Street
Woodbine Avenue to Broadway	Maple Avenue	Willow Run
River Drive	West Avenue	Oak Avenue
Summit Avenue	Edgewater Ave. from Snyder to Broadway	New Street
Delaware View Avenue	Center Street from Delsea Dr. to Edgewater	Duncan Avenue
Highland Avenue	Edgewater Avenue from Twedell to Klinger	Boundary Lane from Birch to Spruce
Crown Point Road from Park Avenue	Almonesson Road	Broadway from Spruce to Harvard
To Chestnut	Olive Street from Almonesson to Delsea	Olive Street from Broadway to Delsea Dr.
Park Avenue	Hunter Street	Harvard Avenue
Hazel Avenue	Stanley Avenue	Yale Avenue
Elm Street	Parkview Drive	Boundary Lane from Spruce to Olive Street
Olive Street	Burr Avenue	Cypress Court
Chestnut Street	Delsea Dr. from Snyder to Hillside Avenue	Walnut Avenue
Gateway Boulevard	Dewey Avenue	State Road
	Parkview Circle/Hillside Avenue	Cedar Avenue
		Locust Avenue
		Ambler Avenue
		Avon Avenue
		High Street
		Lehigh Street

*Look inside for  
SANTA'S schedule (or on our  
Website) Monday, Dec. 6,  
Wednesday, December 8 & Thursday, December 9*



**Christmas Tree Lighting Ceremony**

Thomas West Park

**Friday Evening, December 3<sup>rd</sup>**

Santa ~ Horse & Buggy Ride  
Cookies, Hot Chocolate & More!



*Mayor Russell W. Welsh, Jr.*

*Council President Michael O. Ledrich*

*Councilman George K. Baker*

*Councilman Charles D. Murtaugh*

*Councilman Ronald S. Muhlbaier*

*Councilman James Pennington, Jr.*

*Councilman William C. Rebel*

---

*We're on the Web!*

*Visit us at:*

[www.westville-nj.com](http://www.westville-nj.com)

*Borough of Westville  
1035 Broadway  
Westville, NJ 08093*

PRSR STD  
U.S. POSTAGE  
PAID  
BELLMAWR, NJ  
PERMIT NO. 100

POSTAL CUSTOMER  
WESTVILLE, NEW JERSEY 08093